

Patterns of membership

including the 2024 tabular statement

Compiled for Yearly Meeting,
Friends House, London and online
23–26 May 2025

Yearly Meeting of Quakers in Britain



Proceedings

A number of documents will help us meet with hearts and minds prepared. Collectively, these are the '*Proceedings of the Yearly Meeting of the Religious Society of Friends (Quakers) in Britain 2025*'.

The full set comprises:

1. *Preparing for Yearly Meeting*, including community guidelines.
2. *Agenda and notes*, with introductory material for Yearly Meeting and annual reports of Meeting for Sufferings and other related bodies
3. *Testimonies*, including index of epistles
4. *Trustees' annual report*, including financial statements for the year ended December 2024 (this will be published later in the year)
5. *Patterns of membership*, including the 2024 tabular statement
6. *Minutes*, which are distributed after the conclusion of Yearly Meeting.

All documents will be available online at www.quaker.org.uk/ym. Many Friends will read the documents online, but if you need printed documents, they will be in a printer-friendly PDF format. We ask Friends to print their own copies or to seek assistance from someone in their meeting. This will help us to save costs and reduce the environmental impact of Yearly Meeting.

If you require accessible documents, please request these when booking for Yearly Meeting. If these do not meet your accessibility needs, or the needs of someone you know, please email ym@quaker.org.uk.

All *Quaker faith & practice* references are to the fifth edition, which can be found online at www.quaker.org.uk/qfp.

You can read about Yearly Meeting in chapter 6 of *Quaker faith & practice*. Alternatively, contact Yearly Meeting Arrangements Committee on 020 7663 1040 or at ym@quaker.org.uk or go to www.quaker.org.uk/ym.

Membership patterns in Britain

Yearly Meeting

The tabular statement of membership has been published annually since 1861. It informs the yearly meeting of the number of Friends in membership, based on information provided by area meetings (see *Quaker faith & practice* 4.10h).

This document contains information down to area meeting level. Additional data, including local meeting data, will be available online at www.quaker.org.uk/ym.

Membership

Membership of the yearly meeting at the end of 2024 was 10,764 (11,118 in 2023), a decrease of 354. During the year 240 came into membership. The membership of 172 adults was terminated and area meetings recorded 342 deaths.

Attendees

The number of recorded attendees was 7,173 (6,369 in 2023) and there were 817 children not in membership (923 in 2023).

Marriages

There were 34 marriages in 2024 (32 in 2023). In seven of these both partners were members of Britain Yearly Meeting; in 14 one partner was a member; and in 13 neither partner was a member. People getting married are asked to provide their gender. Of the 68 people who were married, 38 described themselves as female, 29 as male and one used another term. There were 29 weddings of mixed gender couples and five weddings were of same gender couples (all both female).

The statistical tables

Quakers in regions and general meetings of Britain

Table 1 provides a summary of incomings and outgoings for Britain Yearly Meeting as a whole. Membership fell by 3.25% over the year. New memberships rose by 80 compared to 2023. Terminations were the same.

Table 2 provides membership statistics for the yearly meeting since 1935.

Table 3 provides a regional summary of the number of members and attendees as well as an indication of the proportion who are children, attendees and women.

57% of members and attendees are women and 40% of all adults are attendees. The gender category of 'other' (introduced in 2015) has been used by a few area meetings. Meetings may wish to make members and attendees aware of the opportunity to be recorded this way.

Table 4 summarises trends in membership over the last ten years. Convincements over 10 years represent 2,395 Friends or 22.25% of total membership. Terminations over the same period were 1,674 and deaths were 3,540. This resulted in a decline in membership of 2,763 with notified changes from 2014. The overall decline in members and attendees in the year is from 18,261 to 17,937.

Area meetings

Table 5 provides information on members, attendees and children for each area meeting, as well as information on those joining and leaving over the last ten years.

Table 6 looks at trends at area meeting level over ten years. Over this time the membership of four area meetings grew.

Local meetings

There were 440 local meetings (LMs) at the end of 2024 and 16 worshipping groups under the care of a local meeting. One meeting opened and four local meetings informed us of closure. A significant number of Quakers continue to gather online, in local and area meeting groups as well as participating in national and international worship. Many meetings meet in a blended way, combining online participation with those meeting together in a building.

Table 1. Quakers coming into membership and ceasing to be members of Britain Yearly Meeting in 2024

Incomings	2023	2024	Outgoings	2023	2024
By application			By termination of membership		
Adults	159	240	initiative of member	100	93
Children	1	0	initiative of area meeting	72	79
Subtotal	160	240	termination of children's membership	0	0
			Subtotal	172	172
By certificate			By death	299	342
from Britain Yearly Meeting	124	128	to Britain Yearly Meeting	127	149
from another yearly meeting	5	2	to another yearly meeting	13	11
Subtotal	129	130	Subtotal	140	160
Total notified incomings to AMs	289	370	Total notified outgoings from area meetings	611	574
	2023	2024		2023	2024
Members living abroad	120	110	Total number of members at start of year	11,491	11,118
Sojourning members	25	31	Recorded +/- in membership	-373	-354
Number of area meetings	70	70	Balance of notified discrepancies	-24	-69
Number of local meetings	443	443	Number of members at end of year	11,118	10,764
			<i>As a % of membership loss/gain</i>	-3.25%	-3.18%

Figure 1a. Membership in/out changes (2000-2024)
Convincements, terminations, deaths

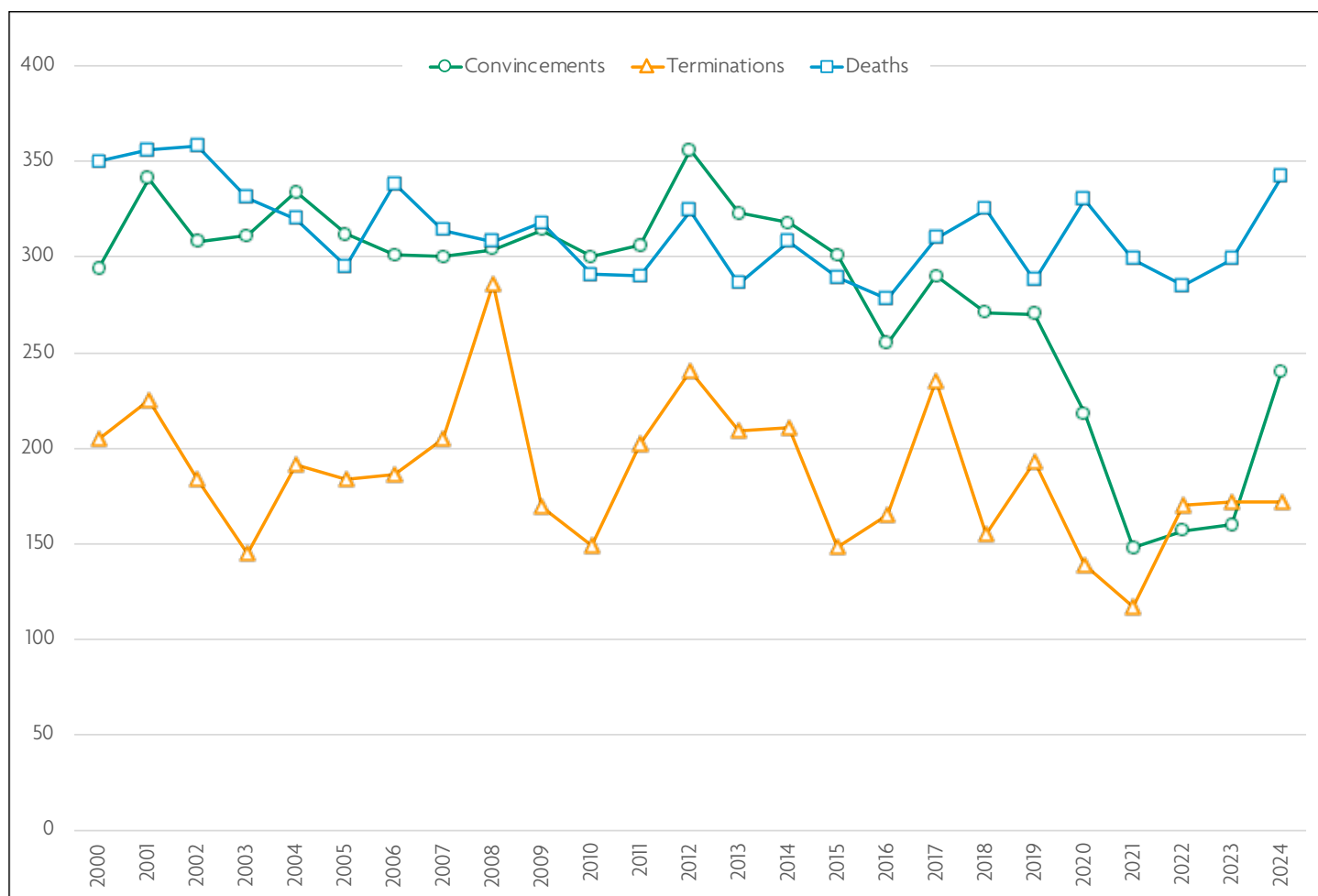
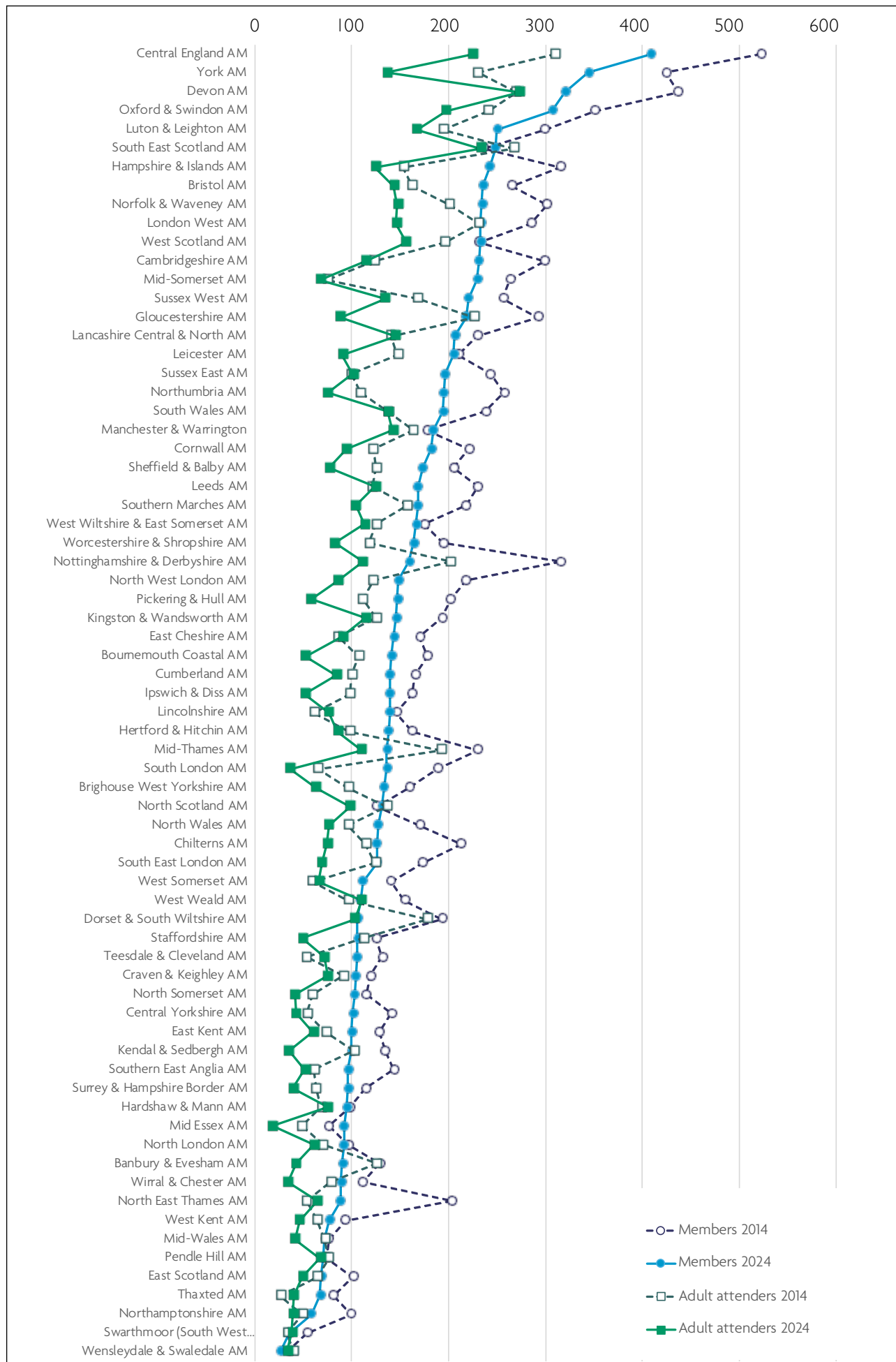


Figure 1b. Members and attenders by area meeting, 2014–2024



About the tabular statement

Since 2013, changes have been made to the tabular statement to help make the data more informative and to highlight important patterns and trends. All data is collected from area meetings but at local meeting level. Historical data from the last 20 years is being used to provide more information on trends.

Following requests from individuals and area meetings, Meeting for Sufferings asked the Recording Clerk to consider how best to provide information on gender. As a result, an additional category of 'other' has been included (see Terminology below). Some meetings have chosen to use 'other' to remove gender reporting in their meetings.

Terminology

Attender: one who, not being a member, frequently attends a specific meeting for worship (*Qf&P* 11.38). Refers to an adult attender; children not in membership are identified separately.

Child: someone under 16 years old.

Member: one who is in membership of the Society. Unless stated differently, figures include children in membership.

Other: adults who have indicated a gender identity other than man or woman. This might include people who have stated they are agender, neutrois or who have a(nother) non-binary gender identity.

Sojourning member: a member of another yearly meeting, recognised as sojourning their membership within an area meeting in Britain (*Qf&P* 11.27). Identified separately, they are not included in the membership figures.

Boundary changes

Where two area meetings combine to form a single one, figures provided for all years combine the data for the constituent meetings. Where area meetings have separated into more than one, membership information is based on the actual numbers for each of the constituent local meetings. In 2015, North Cumbria AM and West Cumbria AM combined to form Cumberland AM. Where a single local meeting has moved from one area to another, it has not been possible to adjust the overall historic figures. Data for that meeting is included with the area meeting of which it is part in any year. This affects Chorley LM, which transferred from Lancashire Central & North AM to Pendle Hill AM in 2016, and Leigh-on-Sea LM, which in 2021 transferred from North East Thames AM into Mid Essex AM.

Year-end figures and corrections

Each area meeting is required to send tabular statement information for the year ending 31 December. Meetings are given an opportunity to correct previous year data with subsequent amendments to changes (including transfers and deaths) which were minuted within the last year but not returned before the year-end deadline.

In the past, revisions were included in the figures for the following year. As this distorts trends, the method adopted since 2014 is to modify membership figures each year to take into account corrections provided the following year. These corrections are indicated in the notified discrepancies row within Table 1.

This document and supplementary tables are also available for download from:

www.quaker.org.uk/ym.

For other formats please contact:

Recording Clerk's Office,
Quakers in Britain
Friends House, 173 Euston Road,
London NW1 2BJ

Statement Coordinator, contact:
Andrew McVicar

E: tabstat@quaker.org.uk

Table 2. BYM membership statistics, 1935 to 2024

Date	Members			Attendees			Members plus attendees			Annual changes			
	Adult members	Child members	Total members	Adult attendees	Children not in membership	Total attendees	Adults	Children	Total-all	Members*	Adult members and attendees	Annual changes: children	Overall total changes
1935	17,251	2,050	19,301										
1940	17,821	2,006	19,827							105			
1945	17,851	2,683	20,534							141			
1950	17,486	3,309	20,795							52			
1955	17,439	3,904	21,343							110			
1960	17,655	3,567	21,222							-24			
1965	18,208	2,854	21,062	5,248	3,899	9,147	23,456	6,753	30,209	-32			
1970	18,832	1,920	20,752	5,796	4,345	10,141	24,628	6,265	30,893	-62	1,172	-488	684
1975	18,865	1,133	19,998	5,830	4,685	10,515	24,695	5,818	30,513	-244	80	-61	19
1980	17,891	658	18,549	5,880	4,278	10,158	23,771	4,936	28,707	-235	-397	-310	-707
1981	17,790	601	18,391	6,243	4,611	10,854	24,033	5,212	29,245	-158	262	276	538
1982	17,741	562	18,303	6,557	4,836	11,393	24,298	5,398	29,696	-88	265	186	451
1983	17,631	500	18,131	6,788	4,655	11,443	24,419	5,155	29,574	-172	121	-243	-122
1984	17,574	471	18,045	7,358	4,956	12,314	24,932	5,427	30,359	-86	513	272	785
1985	17,605	471	18,076	7,732	5,006	12,738	25,337	5,477	30,814	31	405	50	455
1986	17,636	435	18,071	7,936	5,188	13,124	25,572	5,623	31,195	-5	235	146	381
1987	17,692	395	18,087	8,174	5,203	13,377	25,866	5,598	31,464	16	294	-25	269
1988	17,640	370	18,010	8,529	5,089	13,618	26,169	5,459	31,628	-77	303	-139	164
1989	17,709	361	18,070	8,691	5,183	13,874	26,400	5,544	31,944	60	231	85	316
1990	17,765	319	18,084	8,758	5,114	13,872	26,523	5,433	31,956	14	123	-111	12
1991	17,760	312	18,072	8,997	5,340	14,337	26,757	5,652	32,409	-12	234	219	453
1992	17,651	283	17,934	8,995	4,886	13,881	26,646	5,169	31,815	-138	-111	-483	-594
1993	17,549	253	17,802	9,207	4,857	14,064	26,756	5,110	31,866	-132	110	-59	51
1994	17,351	228	17,579	8,958	4,898	13,856	26,309	5,126	31,435	-223	-447	16	-431
1995	17,296	222	17,518	8,901	4,629	13,530	26,197	4,851	31,048	-61	-112	-275	-387
1996	17,119	211	17,330	9,054	4,458	13,512	26,173	4,669	30,842	-188	-24	-182	-206
1997	16,998	191	17,189	9,129	4,304	13,433	26,127	4,495	30,622	-141	-46	-174	-220
1998	16,786	192	16,978	9,201	4,108	13,309	25,987	4,300	30,287	-211	-140	-195	-335
1999	16,532	179	16,711	9,038	4,046	13,084	25,570	4,225	29,795	-267	-417	-75	-492
2000	16,312	174	16,486	9,058	3,770	12,828	25,370	3,944	29,314	-225	-200	-281	-481
2001	16,032	169	16,201	8,719	3,635	12,354	24,751	3,804	28,555	-285	-619	-140	-759
2002	15,796	149	15,945	8,412	3,453	11,865	24,208	3,602	27,810	-256	-543	-202	-745
2003	15,615	142	15,757	8,565	3,382	11,947	24,180	3,524	27,704	-188	-28	-78	-106
2004	15,415	133	15,548	8,468	3,017	11,485	23,883	3,050	26,933	-209	-297	-474	-771
2005	15,273	101	15,374	8,127	2,764	10,891	23,404	2,865	26,269	-170	-479	-185	-664
2006	15,065	82	15,147	8,164	2,475	10,639	23,212	2,557	25,769	-248	-192	-308	-500
2007	14,847	63	14,910	8,133	2,228	10,361	22,980	2,291	25,271	-220	-232	-266	-498
2008	14,552	55	14,607	8,017	2,190	10,207	22,569	2,245	24,814	-303	-411	-46	-457
2009	14,371	59	14,430	8,330	2,237	10,567	22,701	2,296	24,997	-177	132	51	183
2010	14,220	55	14,275	8,560	2,196	10,756	22,780	2,251	25,031	-155	79	-45	34
2011	14,048	49	14,097	8,711	2,107	10,818	22,759	2,156	24,915	-178	-21	-95	-116
2012	13,873	43	13,916	8,681	2,004	10,685	22,554	2,047	24,601	-181	-205	-109	-314
2013	13,656	47	13,703	8,495	1,984	10,479	22,151	2,031	24,182	-213	-403	-16	-419
2014	13,483	44	13,527	8,409	1,947	10,356	21,871	1,990	23,861	-176	-280	-41	-321
2015	13,335	41	13,376	7,983	1,683	9,666	21,318	1,724	23,042	-151	-553	-266	-819
2016	13,146	42	13,188	8,131	1,544	9,675	21,277	1,586	22,863	-188	-41	-138	-179
2017	12,884	48	12,892	7,955	1,506	9,461	20,799	1,554	22,353	-296	-478	-32	-510
2018	12,624	42	12,666	7,433	1,476	8,909	20,057	1,518	21,575	-226	-742	-36	-778
2019	12,386	112	12,498	6,965	1,283	8,248	19,351	1,395	20,746	-168	-706	-123	-829
2020	12,032	93	12,125	6,902	1,164	8,066	18,934	1,257	20,191	-373	-417	-138	-555
2021	11,737	91	11,828	6,479	1,006	7,485	18,226	1,098	19,313	-297	-708	-159	-878
2022	11,460	31	11,491	6,049	899	6,948	17,509	930	18,439	-337	-717	-168	-874
2023	11,088	30	11,118	6,220	923	7,143	17,308	953	18,261	-373	-201	23	-178
2024	10,722	42	10,764	6,356	817	7,173	17,078	859	17,937	-354	-230	-94	-324

* Membership change figures for 1940 to 1960 are annual averages for each five-year period.
 Membership figures from 2000 are adjusted to include subsequent corrections provided by area meetings.

Table 3. Quakers in regions and general meetings of Britain, 2024: summary

Region	Number of members at end 2024						Number of attenders at end 2024						Members plus attenders at end 2024						Percentages		
	Men	Women	Other	Unspecified / not disclosed (adults)	Children	Total	Men	Women	Other	Unspecified / not disclosed (adults)	Children	Total adults	Men	Women	Other	Unspecified / not disclosed (adults)	Children	Total adults	Percent of total who are children	Percent of adults who are members	Percent of adults who are women
Bedfordshire	193	252	-	126	1	572	108	181	2	74	51	416	301	433	2	200	52	936	5%	58%	46%
Berks & Oxon	185	346	2	-	-	533	153	196	-	40	389	338	542	2	-	40	882	4%	58%	61%	
Bristol & Wessex	321	615	1	-	13	950	209	324	-	71	604	530	939	1	-	84	1,470	5%	60%	64%	
Cumberland	52	87	-	-	-	139	32	52	-	-	84	223	84	139	-	-	-	223	0%	62%	62%
Derbys, Lincs & Notts	114	179	-	-	5	298	81	106	-	12	199	497	285	-	-	17	480	3%	59%	59%	
Devon & Cornwall	170	331	-	-	1	502	134	233	-	10	377	879	304	564	-	11	868	1%	57%	65%	
Essex & Suffolk	136	257	1	-	-	394	70	89	1	9	169	563	206	346	2	9	554	2%	70%	62%	
Hants, SE Dorset & Islands	42	99	-	242	-	383	15	37	-	124	190	573	57	136	-	366	14	559	2%	67%	24%
Kent	61	116	-	-	-	177	46	60	-	-	106	283	107	176	-	-	-	283	0%	63%	62%
London	339	623	6	-	1	969	218	357	1	89	665	1,634	557	980	7	-	90	1,544	6%	59%	63%
N Wales & NW England	242	464	-	-	2	708	209	266	9	69	553	1,261	451	730	9	-	71	1,190	6%	56%	61%
NE England	124	197	-	-	5	326	71	106	2	12	191	517	195	303	2	-	17	500	3%	62%	61%
Norfolk, Cambs & Hunts	174	290	1	-	-	465	95	163	3	32	293	758	269	453	4	-	32	726	4%	61%	62%
Scotland	247	430	3	-	-	680	220	308	8	78	614	1,294	467	738	11	-	78	1,216	6%	53%	61%
Sussex & Surrey	226	390	1	-	4	621	136	247	1	48	432	1,053	362	637	2	-	52	1,001	5%	59%	64%
Warwick, Leics & Staffs	111	199	-	409	1	720	66	73	-	225	416	1,136	177	272	-	634	53	1,083	5%	63%	25%
Western	292	520	3	-	1	816	171	275	6	54	506	1,322	463	795	9	-	55	1,267	4%	62%	63%
Westmorland	123	212	-	-	6	341	75	135	8	27	245	586	198	347	8	-	33	553	6%	57%	63%
Yorkshire	421	744	3	-	2	1,170	228	340	7	149	724	1,894	649	1,084	10	-	151	1,743	8%	62%	62%
REGIONAL TOTALS	3,573	6,351	21	777	42	10,764	2,337	3,548	48	423	7,173	17,937	5,910	9,899	69	1,200	859	17,078	4%	60%	57%
WALES TOTALS	134	258	-	1	-	393	110	141	3	34	288	681	244	399	3	1	34	647	5%	58%	62%
SCOTLAND TOTALS	247	430	3	-	-	680	220	308	8	70	606	1,286	467	738	11	-	70	1,216	5%	53%	61%
ENGLAND TOTALS	3,192	5,663	18	776	42	9,691	2,007	3,099	37	423	6,279	15,970	5,199	8,762	55	1,199	755	15,215	5%	60%	58%

Table 4. Membership changes in regions and general meetings of Britain, 2024: recent trends

Region	Members			Members and attenders		% of adults who are members		Convincements		Deaths		Terminations		Net geographic moves	
	2024	2023	2014	2024	2023	2014	2024	2014	2024	2014	2024	2024	2014	2024	Ten year net 2024-2014
Bedfordshire	572	581	773	-201	-9	1,227	57.9%	4	18	24	17	5	17	-1	-35
Berks & Oxon	533	551	710	-177	-18	1,266	56.1%	10	11	10	11	12	15	-4	-4
Bristol & Wessex	950	981	1,151	-201	-31	1,798	61.1%	18	36	29	28	4	8	-5	0
Cumberland	139	142	165	-26	-3	261	62.3%	2	0	1	7	0	12	1	1
Derbys, Lincs & Notts	298	371	462	-164	-73	725	60.0%	10	11	6	8	0	2	-3	4
Devon & Cornwall	502	515	658	-156	-13	1,047	57.1%	7	17	17	11	1	3	-1	5
Essex & Suffolk	394	400	462	-68	-6	693	70.0%	12	10	7	16	7	5	0	7
Hants, SE Dorset & Islands	383	391	493	-110	-8	751	66.8%	5	13	24	13	4	11	3	7
Kent	177	178	221	-44	-1	358	61.7%	15	16	6	2	9	6	4	12
London	969	1,042	1,356	-387	-73	2,144	59.3%	19	30	41	29	41	21	-18	13
N Wales & NW England	708	721	800	-92	-13	1,367	58.5%	17	15	18	18	12	25	3	16
NE England	326	332	421	-95	-6	621	63.1%	8	8	8	9	8	4	-1	24
Norfolk, Cambs & Hunts	465	481	600	-135	-16	918	65.4%	6	8	15	11	12	2	-3	30
Scotland	680	671	694	-14	+9	1,357	51.1%	20	14	16	9	4	9	9	31
Sussex & Surrey	621	626	767	-146	-5	1,190	59.0%	17	16	15	20	6	21	0	35
Warwick, Leics & Staffs	720	735	857	-137	-15	1,426	60.1%	40	46	15	22	11	11	2	35
Western	816	844	1,018	-202	-28	1,728	58.9%	14	29	31	30	15	4	3	61
Westmorland	341	352	417	-76	-11	690	60.4%	3	10	6	13	4	3	0	79
Yorkshire	1,170	1,204	1,480	-310	-34	2,303	61.8%	13	34	29	34	17	32	0	134
REGIONAL TOTALS	10,764	11,118	13,505	-2,741	-354	21,870	62.2%	240	342	318	308	172	211	-0.58	23.95

Table 5. Changes in membership, 2014 to 2024

AM#	AM reference	LMs in 2014	Members 2014	Child attenders 2014	Adult attenders 2014	LMs in 2024	Members 2024	Child attenders 2024	Adult attenders 2024	Total members and attenders at end 2024	Members joining and leaving over ten year period				
											Convincements	Transfers in	Transfers out	Terminations	Deaths
1	Chilterns	7	213	31	114	7	126	5	74	205	15	16	28	45	63
2	Hertford & Hitchin	6	162	21	97	6	138	20	85	243	27	8	17	0	30
3	Luton & Leighton	10	299	46	194	9	250	21	167	438	44	23	15	45	48
4	Northamptonshire	4	99	9	49	3	58	5	39	102	22	0	14	13	30
	BEDFORDSHIRE	27	773	107	454	25	572	51	365	988	108	47	74	103	171
5	Banbury & Evesham	6	129	13	126	6	90	3	42	135	12	17	20	8	44
6	Mid-Thames	7	230	42	192	8	136	12	110	258	49	29	25	62	37
7	Oxford & Swindon	9	351	46	241	8	307	25	197	529	47	33	35	6	65
	BERKS & OXON	22	710	101	559	22	533	40	349	922	108	79	80	76	146
8	Bristol	7	265	50	162	7	235	37	143	415	74	41	43	23	63
9	Dorset & South Wiltshire	6	193	11	178	6	106	9	103	218	26	31	15	43	67
10	Mid-Somerset	4	263	6	74	4	229	1	67	297	10	27	4	4	35
11	North Somerset	4	115	17	59	3	103	-	41	144	15	24	14	2	9
12	West Somerset	7	140	12	59	6	111	4	66	181	25	22	23	16	32
13	West Wiltshire & East Somerset	6	175	16	125	6	166	20	113	299	52	33	23	9	51
	BRISTOL & WESSEX	34	1151	112	657	32	950	71	533	1554	202	178	122	97	257
14	Cumberland	8	165	23	100	5	139	-	84	223	11	20	16	28	50
	CUMBERLAND	8	165	23	100	5	139	-	84	223	11	20	16	28	50
15	Lincolnshire	7	146	8	61	8	139	11	76	226	51	11	16	9	31
16	Nottinghamshire & Derbyshire	9	316	28	202	8	159	1	111	271	47	22	19	12	49
	DERBYS, LINCS & NOTTS	16	462	36	263	16	298	12	187	497	98	33	35	21	80
17	Cornwall	9	221	38	122	8	182	10	94	286	53	40	17	25	73
18	Devon	13	437	46	270	13	320	-	273	593	74	37	26	56	55
	DEVON & CORNWALL	22	658	84	392	21	502	10	367	879	127	77	43	81	128
19	Ipswich & Diss	7	162	4	98	6	139	1	51	191	29	29	18	19	47
20	Mid-Essex	4	76	9	48	4	92	-	18	110	29	3	7	5	33
21	Southern East Anglia	3	143	13	61	4	96	-	51	147	37	10	16	54	41
22	Thaxted	4	81	14	26	4	67	8	40	115	10	4	0	2	22
	ESSEX & SUFFOLK	18	462	40	233	18	394	9	160	563	105	46	41	80	143
23	Bournemouth Coastal	6	178	8	107	6	141	-	52	193	39	16	21	20	50
24	Hampshire & Islands	11	315	35	153	11	242	14	124	380	48	51	32	15	64
	HANTS, SE DORSET & ISLANDS	17	493	43	260	17	383	14	176	573	87	67	53	35	114
25	East Kent	5	128	8	73	4	100	-	60	160	19	16	22	17	20
26	West Kent	5	93	6	64	5	77	-	46	123	17	11	8	-1	20
	KENT	10	221	14	137	9	177	-	106	283	36	27	30	16	40
27	Kingston & Wandsworth	5	193	43	125	5	146	11	114	271	50	21	44	37	26
28	London West	7	285	30	231	7	233	-	146	379	59	31	64	20	49
29	North East Thames	7	203	31	53	6	88	21	64	173	42	21	68	46	48
30	North London	5	96	32	70	5	92	15	61	168	38	16	22	4	7
31	North West London	7	218	48	122	5	148	-	86	234	46	14	31	-7	53
32	South East London	5	173	53	124	4	126	41	69	236	32	12	29	10	30
33	South London	5	188	19	65	4	136	1	36	172	29	3	8	30	40
	LONDON	41	1356	256	790	36	969	89	576	1634	296	118	266	140	253
34	East Cheshire	8	170	39	86	8	143	22	90	255	27	16	19	11	42
35	Hardshaw & Mann	5	98	19	68	5	95	11	75	181	17	18	5	9	17
36	Manchester & Warrington	5	177	58	163	5	184	36	142	362	25	21	15	23	28
37	North Wales/Gogledd Cymru	10	170	26	96	10	127	-	76	203	31	9	7	28	37
38	Pendle Hill	6	74	14	76	6	70	-	67	137	13	10	13	6	16
39	Wirral & Chester	3	111	9	78	3	89	-	34	123	10	10	9	21	25
	N WALES & NW ENGLAND	37	800	165	567	37	708	69	484	1261	123	84	68	98	165
40	Northumbria	8	257	26	109	8	195	6	75	276	40	27	17	69	69
41	Teesdale & Cleveland	7	131	13	53	6	105	6	71	182	34	26	14	1	28
42	Wensleydale & Swaledale	2	33	2	40	2	26	-	33	59	3	3	-1	1	6
	NE ENGLAND	17	421	41	202	16	326	12	179	517	77	56	30	71	103
43	Cambridgeshire	8	299	57	123	6	231	30	114	375	52	44	22	80	67
44	Norfolk & Waveney	11	301	30	201	10	234	2	147	383	55	22	18	76	72
	NORFOLK, CAMBS & HUNTS	19	600	87	324	16	465	32	261	758	107	66	40	156	139
45	East Scotland	4	101	13	64	3	68	8	49	125	18	11	19	9	24

Table 5, continued

AM#	AM reference	LMs in 2014	Members 2014	Child attenders 2014	Adult attenders 2014	LMs in 2024	Members 2024	Child attenders 2024	Adult attenders 2024	Total members and attenders at end 2024	Members joining and leaving over ten year period				
											Convincements	Transfers in	Transfers out	Terminations	Deaths
46	North Scotland	13	126	37	136	6	131	15	98	244	36	24	13	14	26
47	South East Scotland	9	236	83	267	9	248	46	233	527	68	50	29	51	51
48	West Scotland	12	231	58	196	12	233	9	156	398	55	39	12	29	37
	SCOTLAND	38	694	191	663	30	680	78	536	1294	177	124	73	103	138
49	Surrey & Hampshire Border	5	114	23	63	5	96	11	39	146	52	11	22	21	29
50	Sussex East	9	243	19	99	9	195	-	101	296	36	35	14	40	72
51	Sussex West	8	256	38	168	6	220	29	134	383	34	36	28	43	69
52	West Weald	7	154	21	96	7	106	8	110	224	16	4	16	17	52
	SUSSEX & SURREY	29	767	101	426	27	621	48	384	1049	138	86	80	121	222
53	Central England	18	522	70	310	14	409	39	225	673	55	47	43	56	101
54	Leicester	4	210	44	147	4	205	13	90	307	54	24	19	2	56
55	Staffordshire	7	125	10	112	7	106		49	155	38	16	17	25	27
	WARWICK, LEICS & STAFFS	29	857	124	569	25	720	52	364	1136	147	87	79	83	184
56	Gloucestershire	8	292	35	226	7	218	16	88	322	35	41	29	43	81
57	Mid-Wales/ Canolbarth Cymru	6	76	13	72	5	72	4	41	117	10	0	8	4	15
58	South Wales/ De Cymru	13	238	29	137	13	194	27	137	358	44	40	27	56	53
59	Southern Marches/ y Gororau Deheuol	9	218	40	157	7	168	-	104	272	50	37	28	37	91
60	Worcestershire & Shropshire	7	194	26	118	6	164	7	82	253	32	25	26	36	37
	WESTERN	43	1018	143	710	38	816	54	452	1322	171	143	118	176	277
61	Kendal & Sedbergh	4	134	28	102	4	100	8	35	143	8	6	9	1	36
62	Lancashire Central & North	6	229	29	140	5	206	18	145	363	12	21	28	17	31
63	Swarthmoor (SW Cumbria)	4	54	4	33	3	35	1	38	74	3	3	3	4	25
	WESTMORLAND	14	417	61	275	12	341	27	218	586	23	30	41	22	92
64	Brighouse West Yorkshire	5	159	45	96	5	133	18	63	214	7	25	22	11	35
65	Central Yorkshire	6	141	22	54	6	101	2	42	145	29	11	15	17	33
66	Craven & Keighley	5	119	5	91	5	104		75	177	16	15	10	18	27
67	Leeds	7	230	22	121	6	168	41	124	333	29	20	16	69	57
68	Pickering & Hull	7	202	13	111	7	147	1	58	206	13	9	7	-16	75
69	Sheffield & Balby	4	205	50	125	4	173	39	77	289	32	30	16	46	22
70	York	5	424	66	230	5	344	48	136	528	71	68	19	54	98
	YORKSHIRE	39	1480	223	828	38	1,170	149	575	1894	197	178	105	199	347
	BYM Total	480	13505	1952	8409	440	10764	817	6356	17937	2338	1546	1394	1706	3049

Boundary changes: Cumulative figures for convincements, transfers, terminations and deaths for the following meetings are estimated to reflect the proportion of the membership forming each new area meeting in the year they were formed.

Table 6. Area meetings by size, 2014 to 2024

AM#	AMs by number of members	Members			Attendees				Combined			Changes: ten year changes as percentage (%) of current AM				
		Members 2014	Members 2024	Average annual change Dec 2014–Dec 2024	Adult attendees 2014	Adult attendees 2024	Average annual change over 10 years	% Adults who are attendees in 2024	Total members and attendees at end 2024*	Change in total members & attendees 2014–2024	Increase or decrease as % of 2014 total	Convincements	Transfers in	Transfers out	Terminations	Deaths
53	Central England AM	522	409	-11.3	310	225	-8.5	35%	673	-229	-25%	15%	11%	11%	14%	25%
70	York AM	424	344	-8	230	136	-9.4	28%	528	-192	-27%	22%	19%	5%	16%	29%
18	Devon AM	437	320	-11.7	270	273	0.3	46%	593	-160	-21%	24%	12%	9%	18%	17%
7	Oxford & Swindon AM	351	307	-4.4	241	197	-4.4	39%	529	-109	-17%	16%	13%	11%	2%	21%
3	Luton & Leighton AM	299	250	-4.9	194	167	-2.7	40%	438	-101	-19%	18%	8%	8%	18%	20%
47	South East Scotland AM	236	248	1.2	267	233	-3.4	48%	527	-59	-10%	26%	18%	14%	25%	21%
24	Hampshire & Islands AM	315	242	-7.3	153	124	-2.9	34%	380	-123	-24%	23%	22%	16%	7%	26%
8	Bristol AM	265	235	-3	162	143	-1.9	38%	415	-62	-13%	32%	17%	18%	10%	25%
44	Norfolk & Waveney AM	301	234	-6.7	201	147	-5.4	39%	383	-149	-28%	25%	11%	7%	35%	32%
28	London West AM	285	233	-5.2	231	146	-8.5	39%	379	-167	-31%	27%	15%	28%	9%	20%
48	West Scotland AM	231	233	0.2	196	156	-4	40%	398	-87	-18%	24%	14%	6%	12%	16%
43	Cambridgeshire AM	299	231	-6.8	123	114	-0.9	33%	375	-104	-22%	26%	20%	10%	31%	29%
10	Mid-Somerset AM	263	229	-3.4	74	67	-0.7	23%	297	-46	-13%	5%	10%	3%	2%	14%
51	Sussex West AM	256	220	-3.6	168	134	-3.4	38%	383	-79	-17%	16%	16%	14%	21%	33%
56	Gloucestershire AM	292	218	-7.4	226	88	-13.8	29%	322	-231	-42%	17%	18%	13%	19%	37%
62	Lancashire Central & North AM	229	206	-2.3	140	145	0.5	41%	369	-29	-7%	7%	12%	15%	8%	13%
54	Leicester AM	210	205	-0.5	147	90	-5.7	31%	308	-93	-23%	25%	12%	9%	1%	26%
50	Sussex East AM	243	196	-4.7	99	101	0.2	34%	297	-64	-18%	21%	16%	7%	21%	35%
40	Northumbria AM	257	195	-6.2	109	75	-3.4	28%	276	-116	-30%	23%	14%	9%	33%	35%
58	South Wales AM	238	194	-4.4	137	137	0	41%	358	-46	-11%	23%	22%	14%	28%	25%
36	Manchester & Warrington	177	184	0.7	163	142	-2.1	44%	362	-36	-9%	13%	11%	8%	11%	17%
17	Cornwall AM	221	182	-3.9	122	94	-2.8	34%	286	-95	-25%	32%	21%	9%	13%	39%
69	Sheffield & Balby AM	205	173	-3.2	125	77	-4.8	31%	289	-91	-24%	21%	19%	11%	25%	13%
67	Leeds AM	230	168	-6.2	121	124	0.3	42%	333	-40	-11%	18%	14%	11%	42%	34%
59	Southern Marches AM	218	168	-5	157	104	-5.3	38%	272	-143	-34%	30%	26%	14%	20%	55%
13	West Wiltshire & East Somerset AM	175	166	-0.9	125	113	-1.2	41%	299	-17	-5%	32%	22%	13%	10%	30%
60	Worcestershire & Shropshire AM	194	164	-3	118	82	-3.6	33%	253	-85	-25%	23%	15%	15%	20%	24%
16	Nottinghamshire & Derbyshire AM	316	159	-15.7	202	111	-9.1	41%	271	-275	-50%	30%	16%	11%	8%	30%
31	North West London AM	218	148	-7	122	86	-3.6	37%	234	-154	-40%	34%	10%	20%	3%	36%
68	Pickering & Hull AM	202	147	-5.5	111	58	-5.3	28%	206	-120	-37%	9%	7%	6%	8%	53%
27	Kingston & Wandsworth AM	193	146	-4.7	125	114	-1.1	44%	271	-90	-25%	40%	14%	30%	23%	17%
34	East Cheshire AM	170	143	-2.7	86	90	0.4	39%	255	-40	-14%	20%	12%	13%	10%	27%
23	Bournemouth Coastal AM	178	141	-3.7	107	52	-5.5	27%	193	-100	-34%	33%	8%	13%	13%	37%
14	Cumberland AM	165	139	-2.6	100	84	-1.6	38%	223	-65	-23%	9%	14%	12%	21%	35%
19	Ipswich & Diss AM	162	139	-2.3	98	51	-4.7	27%	191	-73	-28%	23%	22%	12%	11%	35%
15	Lincolnshire AM	146	139	-0.7	61	76	1.5	35%	226	11	5%	32%	7%	14%	6%	19%
2	Hertford & Hitchin AM	162	138	-2.4	97	85	-1.2	38%	243	-37	-13%	20%	6%	14%	9%	23%
6	Mid-Thames AM	230	136	-9.4	192	110	-8.2	45%	258	-206	-44%	38%	23%	19%	39%	32%
33	South London AM	188	136	-5.2	65	36	-2.9	21%	173	-99	-36%	23%	4%	7%	18%	30%
64	Brighouse West Yorkshire AM	159	133	-2.6	96	63	-3.3	32%	214	-86	-29%	8%	18%	17%	9%	25%
46	North Scotland AM	126	131	0.5	136	98	-3.8	43%	244	-55	-18%	27%	22%	12%	9%	18%
37	North Wales AM	170	127	-4.3	96	76	-2	37%	203	-89	-30%	25%	9%	6%	22%	31%
1	Chilterns AM	213	126	-8.7	114	74	-4	37%	205	-153	-43%	15%	13%	25%	35%	51%
32	South East London AM	173	126	-4.7	124	69	-5.5	35%	236	-114	-33%	25%	11%	30%	7%	21%
12	West Somerset AM	140	111	-2.9	59	66	0.7	37%	181	-30	-14%	21%	17%	17%	13%	25%
52	West Weald AM	154	109	-4.5	96	110	1.4	50%	227	-44	-16%	15%	3%	17%	18%	44%
9	Dorset & South Wiltshire AM	193	106	-8.7	178	103	-7.5	49%	218	-164	-43%	25%	31%	12%	42%	64%
55	Staffordshire AM	125	106	-1.9	112	49	-6.3	32%	155	-92	-37%	36%	15%	14%	30%	24%
41	Teesdale & Cleveland AM	131	105	-2.6	53	71	1.8	40%	182	-15	-8%	32%	26%	11%	12%	27%
66	Craven & Keighley AM	119	104	-1.5	91	75	-1.6	42%	179	-36	-17%	19%	17%	17%	25%	25%
11	North Somerset AM	115	103	-1.2	59	41	-1.8	28%	144	-47	-25%	11%	26%	14%	2%	12%
65	Central Yorkshire AM	141	101	-4	54	42	-1.2	29%	145	-72	-33%	29%	12%	15%	16%	27%
25	East Kent AM	128	100	-2.8	73	60	-1.3	38%	160	-49	-23%	19%	17%	20%	15%	19%
61	Kendal & Sedbergh AM	134	100	-3.4	102	35	-6.7	26%	143	-121	-46%	14%	7%	9%	1%	30%
21	Southern East Anglia AM	143	96	-4.7	61	51	-1	35%	147	-70	-32%	34%	10%	19%	69%	41%
49	Surrey & Hampshire Border AM	114	96	-1.8	63	39	-2.4	29%	146	-54	-27%	55%	11%	19%	21%	32%
35	Hardshaw & Mann AM	98	95	-0.3	68	75	0.7	44%	181	-4	-2%	21%	20%	9%	9%	19%
20	Mid Essex AM	76	92	1.6	48	18	-3	16%	110	-23	-17%	33%	4%	9%	10%	35%

Table 6, continued

AM#	AMs by number of members	Members			Attendees				Combined			Changes: ten year changes as percentage (%) of current AM				
		Members 2014	Members 2024	Average annual change 2014–2024	Adult attendees 2014	Adult attendees 2024	Average annual change 2014–2024	% Adults who are attendees in 2024	Total members and attendees at end 2024*	Change in total members & attendees 2014–2024	Increase or decrease as % of 2014 total	Convincements	Transfers in	Transfers out	Terminations	Deaths
30	North London AM	96	92	-0.4	70	61	-0.9	40%	168	-30	-15%	41%	17%	18%	4%	11%
5	Banbury & Evesham AM	129	90	-3.9	126	42	-8.4	32%	135	-133	-50%	16%	18%	22%	10%	49%
39	Wirral & Chester AM	111	89	-2.2	78	34	-4.4	28%	123	-75	-38%	15%	13%	10%	24%	29%
29	North East Thames AM	203	88	-11.5	53	64	1.1	42%	173	-114	-40%	52%	24%	78%	35%	47%
26	West Kent AM	93	77	-1.6	64	46	-1.8	37%	123	-40	-25%	18%	18%	12%	3%	27%
57	Mid-Wales AM	76	72	-0.4	72	41	-3.1	36%	117	-44	-27%	14%	1%	10%	6%	17%
38	Pendle Hill AM	74	70	-0.4	76	67	-0.9	49%	137	-27	-16%	17%	7%	19%	16%	29%
45	East Scotland AM	101	68	-3.3	64	49	-1.5	42%	125	-53	-30%	22%	21%	25%	15%	37%
22	Thaxted AM	81	67	-1.4	26	40	1.4	37%	115	-6	-5%	15%	7%	1%	12%	34%
4	Northamptonshire AM	99	58	-4.1	49	39	-1	40%	102	-55	-35%	43%	2%	19%	28%	48%
63	Swarthmoor (South West Cumbria) AM	54	35	-1.9	33	38	0.5	52%	74	-17	-19%	11%	14%	6%	6%	80%
42	Wensleydale & Swaledale AM	33	26	-0.7	40	33	-0.7	56%	59	-16	-21%	12%	8%	4%	8%	23%
Totals		13,505	10,764	-3.92	8,409	6,356	-2.85	37%	17,937	-6,016	-24%	23%	15%	14%	17%	30%
				Average			Average	Average			Average	Average				

AM reference # match numbers used in the map on the back cover.

* Includes children.

Figure 2. Area Meetings of Britain Yearly Meeting





Quakers share a way of life, not a set of beliefs. Quaker unity is based on shared understanding and a shared practice of silent worship – a communal stillness.

Quakers seek to experience God directly – internally, in relationships with others, and with the world. Local meetings for worship are open to all who wish to attend.

Quakers try to live with honesty and integrity. This means speaking truth to all, including people in positions of power. The Quaker commitment to peace arises from the conviction that love is at the heart of existence and that all human beings are unique and equal.

This leads Quakers to put faith into action by working locally and globally to change the systems that cause injustice and violent conflict.

Accessible versions of this document are available.

Please contact the publications manager at publications@quaker.org.uk or call 020 7663 1162

Britain Yearly Meeting of the Religious Society of Friends (Quakers)

Registered charity number 1127633

Friends House, 173 Euston Road, London, NW1 2BJ

Follow us on social media @BritishQuakers

www.quaker.org.uk