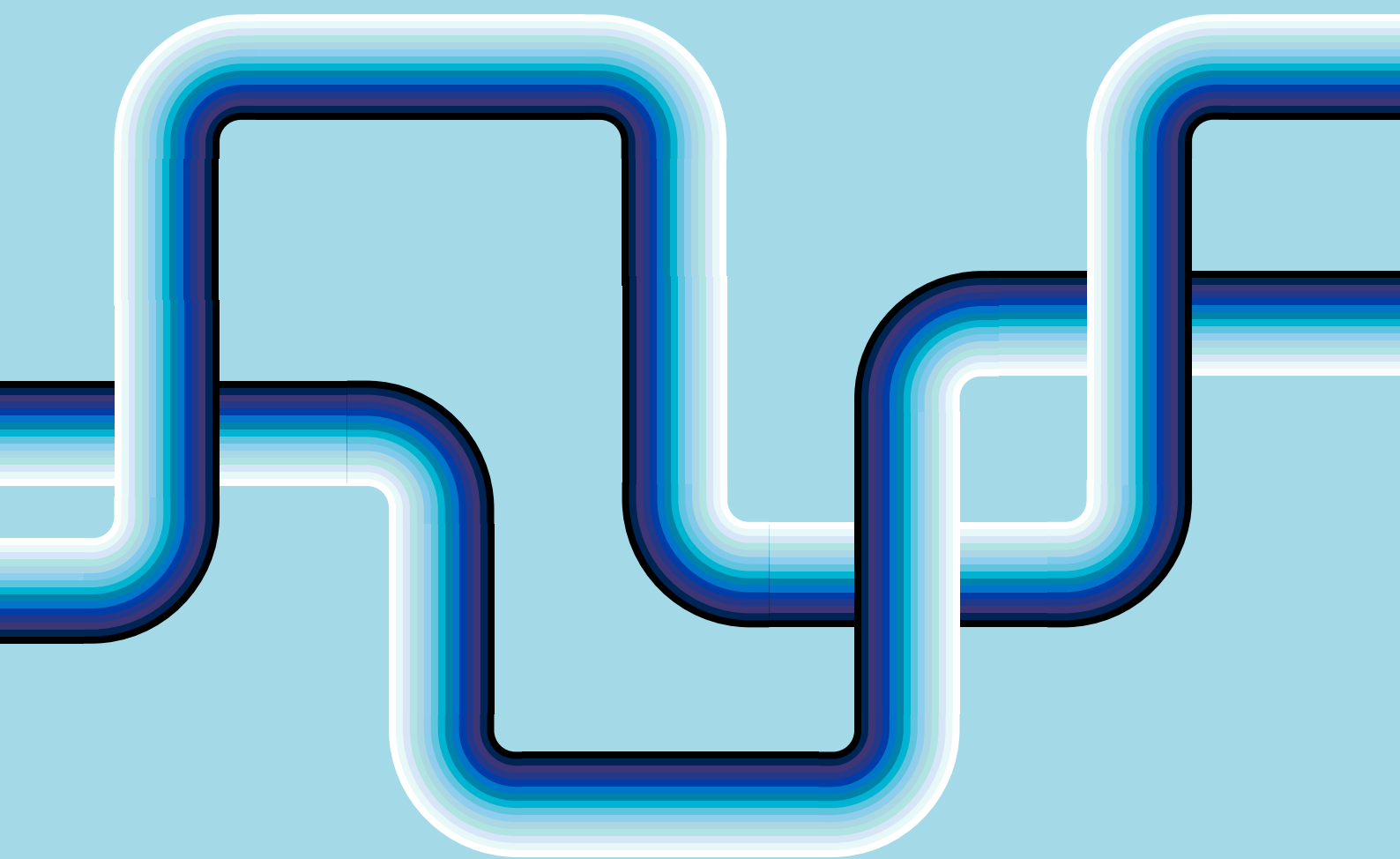


Yearly Meeting of the Religious Society
of Friends (Quakers) in Britain

Patterns of membership

including the 2017 tabular statement



Compiled for Yearly Meeting,
Friends House, London
4–7 May 2018



Membership patterns in Britain Yearly Meeting

The tabular statement of membership has been published annually since 1862. It informs the yearly meeting of the number of Friends in membership, based on information provided by area meetings (see *Quaker faith & practice* 4.10h).

This document contains information down to area meeting level. Additional data, including local meeting data, will be available online at www.quaker.org.uk/ym.

The membership of BYM

Membership of the yearly meeting at the end of 2017 was 12,934 (13,188 in 2016), a decrease of 254. During the year 290 came into membership, including five children. The membership of 235 adults was terminated and area meetings recorded 310 deaths.

Attendees

The number of recorded attendees was 7,955 (8,131 in 2016) and there were in 1,506 children not in membership (1,575 in 2016).

Marriages

There were 42 marriages in 2017 (41 in 2016). In five of these both partners were members of Britain Yearly Meeting; in 20, one partner was a member; and in 19, neither partner was a member. These figures include six same-sex and 36 opposite-sex marriages.

The statistical tables

Table 1 provides a summary of incomings and outgoings for Britain Yearly Meeting as a whole. Membership fell by 1.9% over the year. New memberships were up 14% on 2016. Terminations increased by 42%.

Table 2 provides membership statistics for the yearly meeting since 1935.

Table 3 provides a regional summary of the number of members and attendees as well as an indication of the proportion who are children,

attendees and women. 62% of adult members and attendees are women; 38% of all adults are attendees. The gender category of 'other' (introduced in 2015) has so far only been used by a few area meetings. Meetings may wish to make members and attendees aware of the opportunity to be recorded this way.

Table 4 summarises trends in membership over the last ten years. Conversions over ten years represent 24% of total membership. Terminations over the same period were 13% and deaths were 21% of membership. This resulted in a decline in membership of 13%. The overall decline in members and attendees is 9%.

Area meetings

Table 5 provides information on members, attendees and children for each area meeting, and on those joining and leaving over the last ten years.

Table 6 looks at trends at area meeting level over ten years. Over this time the membership of four area meetings grew by more than 10% and in 14 area meetings the total number of adults (members and attendees) grew by more than 10%. Over this period, nearly a third of area meetings experienced a fall in membership of more than 20%.

Local meetings

There were 476 local meetings (LMs) at the end of 2017. Three meetings opened – Newark LM (Lincolnshire AM), and Earls Colne LM and Harwich LM (both of Southern East Anglia AM). One meeting closed – Guisborough LM (Teesdale & Cleveland AM). Needham Market (Ipswich & Diss) should have been noted as closed in 2015.

Figure 1 shows changes in the number of members by gender. The proportion of men and women has remained fairly constant for the last 75 years. For most area meetings (and the yearly meeting as a whole), the ratio of women to men (members) is about 2:1. Information on those who do not define as men or women, and those not in membership, has not been collected long enough to show anything significant.

Figure 1. Gender of members 1970–2017

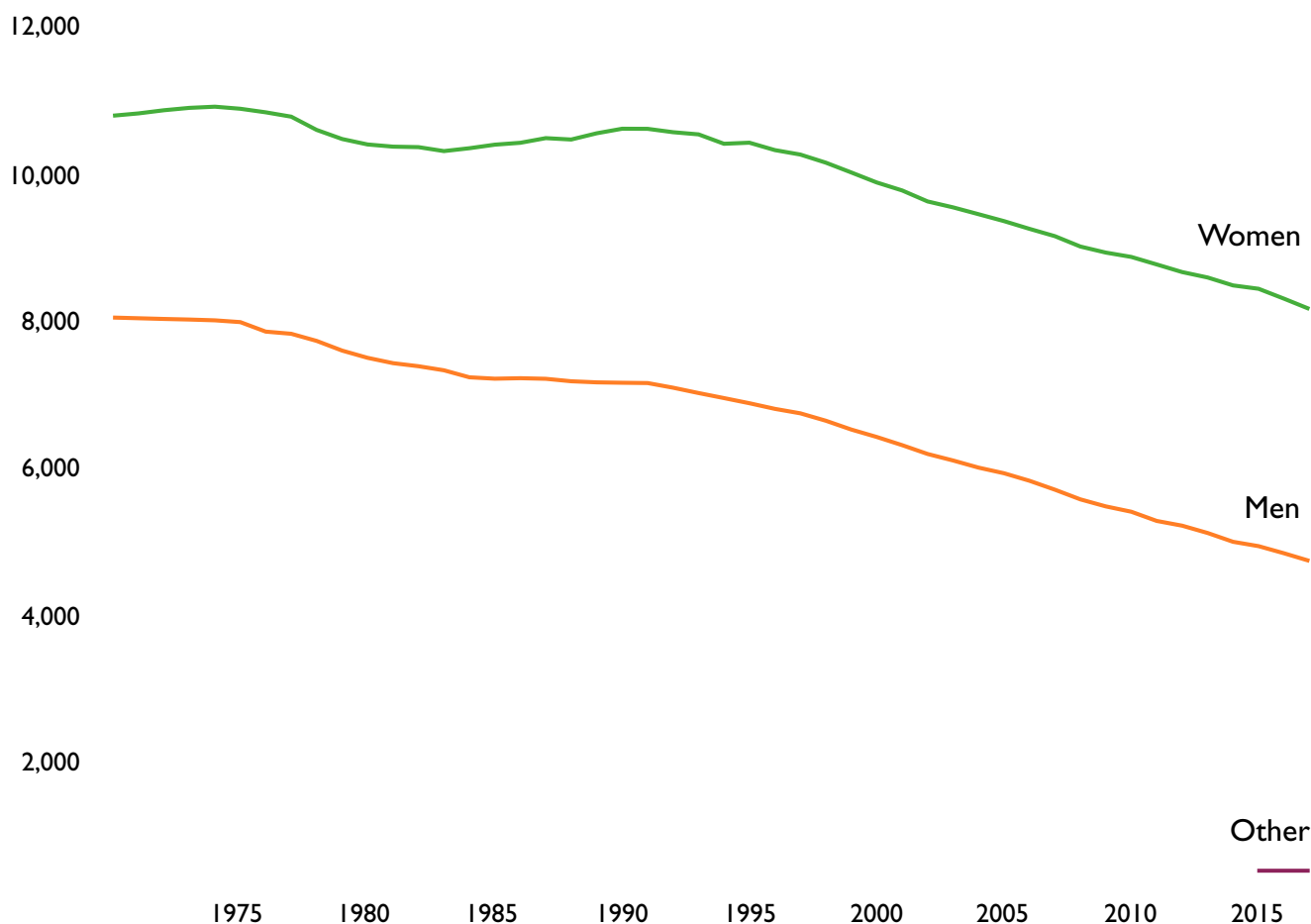


Table 1. Quakers coming into membership and ceasing to be members of Britain Yearly Meeting in 2017

Incomings			Outgoings		
	2016	2017		2016	2017
By application			By termination of membership		
Adults	251	285	initiative of member	74	110
Children	4	5	initiative of area meeting	91	125
Subtotal	255	290	termination of children's membership		
			Subtotal	165	235
			By death	278	310
By certificate			By certificate		
from Britain Yearly Meeting	159	179	to Britain Yearly Meeting	169	178
from another yearly meeting	5	10	to another yearly meeting	11	10
Subtotal	164	189	Subtotal	180	188
Total notified incomings to AMs	419	479	Total notified outgoings from AMs	623	733
	2016	2017		2016	2017
Members living abroad	192	158	Total number of members at start of year	13,376	13,188
Sojourning members	28	16	Recorded increase / decrease in membership	-204	-254
Number of Area Meetings	70	70	Balance of notified discrepancies	16	
Number of Local Meetings	474	476	Number of members at end of year	13,188	12,934
			<i>as a percentage of membership gain / loss</i>	-1.41%	-1.93%

* incomings and outgoings ignore young people turning 16 years old, as they remain in membership

About the tabular statement

Since 2013, changes have been made to the tabular statement to help make the data more informative and to highlight important patterns and trends. All data is collected from area meetings but at local meeting level. Historical data from the last 20 years is being converted to provide more information on trends.

Following requests from individuals and area meetings, Meeting for Sufferings asked the Recording Clerk to consider how best to provide information on gender. A category of 'other' has since been included (see 'Terminology').

Terminology

Attender: one who, not being a member, frequently attends a specific meeting for worship (*Qfēp* 11.38). This refers to adult attenders; children not in membership are identified separately.

Child: someone under 16 years old.

Member: unless stated differently, figures include children in membership.

Other: adults who have indicated a gender identity other than man or woman. This might include people who have stated they are agender, neutrois or who have a(nother) non-binary gender identity.

Sojourning member: a member of another yearly meeting, recognised as sojourning their membership within an area meeting in Britain (*Qfēp* 11.27). Identified separately, they are not included in the membership figures.

Corrections to figures

Each year area meetings are given an opportunity to correct the figures provided for the previous tabular statement. In the past these revisions were included in the figures for the following year. As this distorts trends, the method adopted since the tabular statement for 2014 is to modify membership figures each year to take into account corrections provided the following year.

Boundary changes

Where two area meetings combine to form a single one, figures provided for all years combine the data for the constituent meetings. This applies to Devon AM (formed 2008), Teesdale & Cleveland AM (formed 2009) and Cumberland AM (formed 2015). Where area meetings have separated into more than one, information on members, attenders and children is based on the actual numbers for each of the constituent local meetings.

Up to 2014, figures for flows (convincements, terminations, transfers and deaths) were only collected at area meeting level. Estimates are based on the proportion of the membership forming each new area meeting in the year they were formed. This applies to: North Somerset AM (formed 2011); West Wiltshire and East Somerset AM (formed 2011); Mid-Wales/ Canolbarth Cymru AM (formed 2009); Southern Marches/ y Gororau Deheuol AM (formed 2009). Where a single local meeting moved from one area to another, it has not been possible to adjust the figures. Data for that meeting is included with the area meeting of which it is part in any year. This affects Oundle LM, which transferred from Northamptonshire AM to Cambridgeshire AM in 2010; and Chorley LM, which transferred from Lancashire Central & North AM to Pendle Hill AM in 2016.

This document is free

For additional copies and other formats please contact:

Graham Spackman
Communication & Services
Friends House
173 Euston Road
London NW1 2BJ

020 7663 1021

grahams@quaker.org.uk

This document and supplementary tables not included here are also available for download from www.quaker.org.uk/ym.

Table 2. BYM membership statistics, 1935 to 2017

Date	Members			Attendees			Members plus attendees			Annual changes			
	Adult Members	Child members	Total members	Adult Attendees	Children not in membership	Total attendees	Adults	Children	Total	Members*	Adult members and attendees	Children	Total
1935	17,251	2,050	19,301										
1940	17,821	2,006	19,827							105			
1945	17,851	2,683	20,534							141			
1950	17,486	3,309	20,795							52			
1955	17,439	3,904	21,343							110			
1960	17,655	3,567	21,222							-24			
1965	18,208	2,854	21,062	5,248	3,899	9,147	23,456	6,753	30,209	-32			
1970	18,832	1,920	20,752	5,796	4,345	10,141	24,628	6,265	30,893	-62	1,172	-488	684
1971	18,855	1,770	20,625	5,719	4,297	10,016	24,574	6,067	30,641	-127	-54	-198	-252
1972	18,888	1,618	20,506	5,354	4,500	9,854	24,242	6,118	30,360	-119	-332	51	-281
1973	18,912	1,474	20,386	5,696	4,649	10,345	24,608	6,123	30,731	-120	366	5	371
1974	18,918	1,324	20,242	5,697	4,555	10,252	24,615	5,879	30,494	-144	7	-244	-237
1975	18,865	1,133	19,998	5,830	4,685	10,515	24,695	5,818	30,513	-244	80	-61	19
1976	18,687	1,002	19,689	5,697	4,592	10,289	24,384	5,594	29,978	-309	-311	-224	-535
1977	18,598	895	19,493	6,003	4,576	10,579	24,601	5,471	30,072	-196	217	-123	94
1978	18,321	782	19,103	5,985	4,484	10,469	24,306	5,266	29,572	-390	-295	-205	-500
1979	18,064	720	18,784	6,104	4,526	10,630	24,168	5,246	29,414	-319	-138	-20	-158
1980	17,891	658	18,549	5,880	4,278	10,158	23,771	4,936	28,707	-235	-397	-310	-707
1981	17,790	601	18,391	6,243	4,611	10,854	24,033	5,212	29,245	-158	262	276	538
1982	17,741	562	18,303	6,557	4,836	11,393	24,298	5,398	29,696	-88	265	186	451
1983	17,631	500	18,131	6,788	4,655	11,443	24,419	5,155	29,574	-172	121	-243	-122
1984	17,574	471	18,045	7,358	4,956	12,314	24,932	5,427	30,359	-86	513	272	785
1985	17,605	471	18,076	7,732	5,006	12,738	25,337	5,477	30,814	31	405	50	455
1986	17,636	435	18,071	7,936	5,188	13,124	25,572	5,623	31,195	-5	235	146	381
1987	17,692	395	18,087	8,174	5,203	13,377	25,866	5,598	31,464	16	294	-25	269
1988	17,640	370	18,010	8,529	5,089	13,618	26,169	5,459	31,628	-77	303	-139	164
1989	17,709	361	18,070	8,691	5,183	13,874	26,400	5,544	31,944	60	231	85	316
1990	17,765	319	18,084	8,758	5,114	13,872	26,523	5,433	31,956	14	123	-111	12
1991	17,760	312	18,072	8,997	5,340	14,337	26,757	5,652	32,409	-12	234	219	453
1992	17,651	283	17,934	8,995	4,886	13,881	26,646	5,169	31,815	-138	-111	-483	-594
1993	17,549	253	17,802	9,207	4,857	14,064	26,756	5,110	31,866	-132	110	-59	51
1994	17,351	228	17,579	8,958	4,898	13,856	26,309	5,126	31,435	-223	-447	16	-431
1995	17,296	222	17,518	8,901	4,629	13,530	26,197	4,851	31,048	-61	-112	-275	-387
1996	17,119	211	17,330	9,054	4,458	13,512	26,173	4,669	30,842	-188	-24	-182	-206
1997	16,998	191	17,189	9,129	4,304	13,433	26,127	4,495	30,622	-141	-46	-174	-220
1998	16,786	192	16,978	9,201	4,108	13,309	25,987	4,300	30,287	-211	-140	-195	-335
1999	16,532	179	16,711	9,038	4,046	13,084	25,570	4,225	29,795	-267	-417	-75	-492
2000	16,312	174	16,486	9,058	3,770	12,828	25,370	3,944	29,314	-225	-200	-281	-481
2001	16,032	169	16,201	8,719	3,635	12,354	24,751	3,804	28,555	-285	-619	-140	-759
2002	15,796	149	15,945	8,412	3,453	11,865	24,208	3,602	27,810	-256	-543	-202	-745
2003	15,615	142	15,757	8,565	3,382	11,947	24,180	3,524	27,704	-188	-28	-78	-106
2004	15,415	133	15,548	8,468	3,017	11,485	23,883	3,050	26,933	-209	-297	-474	-771
2005	15,273	101	15,374	8,127	2,764	10,891	23,404	2,865	26,269	-170	-479	-185	-664
2006	15,065	82	15,147	8,164	2,475	10,639	23,212	2,557	25,769	-248	-192	-308	-500
2007	14,847	63	14,910	8,133	2,228	10,361	22,980	2,291	25,271	-220	-232	-266	-498
2008	14,552	55	14,607	8,017	2,190	10,207	22,569	2,245	24,814	-303	-411	-46	-457
2009	14,371	59	14,430	8,330	2,237	10,567	22,701	2,296	24,997	-177	132	51	183
2010	14,220	55	14,275	8,560	2,196	10,756	22,780	2,251	25,031	-155	79	-45	34
2011	14,048	49	14,097	8,711	2,107	10,818	22,759	2,156	24,915	-178	-21	-95	-116
2012	13,873	43	13,916	8,681	2,004	10,685	22,554	2,047	24,601	-181	-205	-109	-314
2013	13,656	47	13,703	8,495	1,984	10,479	22,151	2,031	24,182	-213	-403	-16	-419
2014	13,483	44	13,527	8,409	1,947	10,356	21,871	1,990	23,861	-176	-280	-41	-321
2015	13,335	41	13,376	7,983	1,683	9,666	21,318	1,724	23,042	-151	-553	-266	-819
2016	13,146	42	13,188	8,131	1,544	9,675	21,277	1,586	22,863	-188	-41	-138	-179
2017	12,886	48	12,934	7,955	1,506	9,461	20,841	1,554	22,395	-254	-436	-32	-468

* Membership change figures for 1940 to 1960 are annual averages for each 5 year period
 Membership figures from 2000 are adjusted to include subsequent corrections provided by area meetings.

Table 3. Quakers in regions and general meetings of Britain, 2017: summary

Regions	Number of AMs	Number of LMs	Number of members at end 2017						Number of attenders at end 2017						Members plus attenders at end 2017						Percent of total who are children	Percent of adults who are attenders	Percent of adults who are women	
			Total	Men	Women	Other	Children	Total adults	Total	Men	Women	Other	Children	Total adults	Total	Men	Women	Other	Children	Total adults				
Bedfordshire	4	26	721	294	427			721	485	159	247			79	406	1,206	453	674		79	1,127	7%	36%	60%
Berks & Oxon	3	22	674	232	439	3		671	549	195	295			59	490	1,223	427	734		62	1,161	5%	42%	63%
Bristol & Wessex	6	34	1,134	390	730	1	13	1,121	622	187	347	25		63	559	1,756	577	1,077	26	76	1,680	4%	33%	64%
Cumberland	1	7	154	56	94		4	150	107	35	64	8		107	261	261	91	158	8	4	257	2%	42%	61%
Derbys, Lincs & Notts	2	17	420	167	250	1	2	418	252	110	123		19	233	672	277	373		1	21	651	3%	36%	57%
Devon & Cornwall	2	22	614	209	401		4	610	445	156	242		47	398	1,059	365	643			51	1,008	5%	39%	64%
Essex & Suffolk	4	20	445	161	282		2	443	251	86	120		45	206	696	247	402			47	649	7%	32%	62%
Hants, SE Dorset & Islands	2	17	473	166	305	1	1	472	348	109	197		42	306	821	275	502		1	43	778	5%	39%	65%
Kent	2	11	224	78	146			224	150	55	87		8	142	374	133	233			8	366	2%	39%	64%
London	7	41	1,308	473	830	2	3	1,305	934	298	399		237	697	2,242	771	1,229	2	240	2,002	11%	35%	61%	
N Wales & NW England	6	38	783	271	511		1	782	630	227	294		109	521	1,413	498	805			110	1,303	8%	40%	62%
NE England	3	17	405	157	245	1	2	403	246	84	122		40	206	651	241	367	1	42	609	6%	34%	60%	
Norfolk, Cambs & Hunts	2	18	561	220	337		4	557	340	92	179		69	271	901	312	516			73	828	8%	33%	62%
Scotland	4	34	685	255	430			685	816	268	415		133	683	1,501	523	845			133	1,368	9%	50%	62%
Sussex & Surrey	4	29	731	266	462		3	728	555	180	279		96	459	1,286	446	741			99	1,187	8%	39%	62%
Warwick, Leics & Staffs	3	28	839	307	532			839	632	251	356		25	607	1,471	558	888			25	1,446	2%	42%	61%
Western	5	43	955	356	599			955	845	258	430		157	688	1,800	614	1,029			157	1,643	9%	42%	63%
Westmorland	3	13	400	146	251		3	397	250	73	123		54	196	650	219	374			57	593	9%	33%	63%
Yorkshire	7	39	1,408	518	886	1	3	1,405	1,004	289	491		224	780	2,412	807	1,377	1	227	2,185	9%	36%	63%	
Total	70	476	12,934	4,722	8,157	7	48	12,886	9,461	3,112	4,810	33	1,506	7,955	22,395	7,834	12,967	40	1,554	20,841	7%	38%	62%	
Wales*		32	477	166	311	0	0	477	345	142	200	0	3	342	822	308	511	0	3	819	0%	42%	62%	

*The figures for Wales includes all members and attenders of North Wales AM/CC Gogledd Cymru, Mid-Wales AM/CC Canolbarth Cymru, South Wales AM/CC De Cymru, and of three local meetings in Southern Marches AM/CC y Gorau Deheuol - Abergavenny, Brecon, Llandrindod). These figures are also included in the regional totals above.

Table 4. Membership changes in regions and general meetings of Britain, 2017: recent trends

Regions	Members			Members & Attenders			Change in membership		% adults who are members		Convincements		Deaths		Terminations		Net geographic moves		
	2017	2016	2007	2017	2016	2007	2016-2017	2007-2017	2017	2007	2017	2008-2017	2017	2008-2017	2017	2008-2017	2017	2008-2017	
Bedfordshire	721	739	862	1,127	1,142	1,374	-18	-141	64%	63%	13	182	14	184	10	129	-7	-12	
Berks & Oxon	674	705	849	1,164	1,217	1,418	-31	-175	58%	60%	9	133	12	155	19	170	-9	-12	
Bristol & Wessex	1,134	1,137	1,240	1,693	1,731	1,887	-3	-106	67%	66%	31	232	29	270	15	87	10	49	
Cumberland	154	157	207	261	244	290	-3	-53	58%	71%	3	24	8	61	0	28	2	0	
Derbys, Lincs & Notts	420	418	472	653	638	720	2	-52	64%	66%	17	98	11	70	2	49	-2	2	
Devon & Cornwall	614	651	632	1,012	1,047	1,015	-37	-18	61%	62%	13	155	19	139	29	94	-2	50	
Essex & Suffolk	445	458	558	651	659	783	-13	-113	68%	71%	16	117	9	123	19	107	-1	-16	
Hants, SE Dorset & Islands	473	477	531	779	747	771	-4	-58	61%	69%	9	140	9	120	5	43	1	10	
Kent	224	228	284	366	363	443	-4	-60	61%	64%	1	43	6	52	0	30	1	6	
London	1,308	1,313	1,519	2,005	2,101	2,327	-5	-211	65%	65%	32	395	21	253	3	195	-13	-89	
N Wales & NW England	783	793	918	1,304	1,313	1,527	-10	-135	60%	60%	15	175	14	189	9	124	-2	-13	
NE England	405	405	549	611	606	746	0	-144	66%	74%	10	90	10	87	1	127	1	-4	
Norfolk, Cambs & Hunts	561	584	619	832	893	995	-23	-58	67%	62%	14	175	12	116	26	134	1	5	
Scotland	685	686	723	1,368	1,368	1,289	-1	-38	50%	56%	18	167	11	116	12	110	4	7	
Sussex & Surrey	731	735	858	1,190	1,203	1,329	-4	-127	61%	65%	22	213	28	205	6	144	8	-8	
Wanwick, Leics & Staffs	839	839	985	1,446	1,408	1,409	0	-146	58%	70%	24	171	21	215	6	77	3	7	
Western	955	994	1,064	1,643	1,747	1,698	-39	-109	58%	63%	13	207	25	255	29	134	2	27	
Westmorland	400	408	412	596	599	657	-8	-12	67%	63%	3	66	6	92	2	22	-3	21	
Yorkshire	1,408	1,461	1,625	2,188	2,293	2,362	-53	-217	64%	69%	27	318	45	362	42	252	31	46	
Total	12,934	13,188	14,907	20,889	21,319	23,040	-254	-1,973	62%	65%	290	3,101	310	3,064	235	2,056	13	38	0%

Table 5a. Changes in membership, 2007 to 2017

AM reference #	AMs by region+B63	2007						Total members & attenders at end 2017	Members joining and leaving over 10 years to Dec 2017*				
		PMs and RMs 2007	LMs 2017	Total Members at end 2007	Total members at end 2017	Total attenders at end 2017	Children not in membership at end 2017		Convincements	Transfers in	Transfers out	Terminations	Deaths
1	Chilterns	7	7	232	194	103	27	297	51	27	26	28	71
2	Hertford & Hitchin	7	6	205	149	100	16	249	27	12	27	32	34
3	Luton & Leighton	10	9	343	293	171	36	464	73	32	46	49	54
4	Northamptonshire	3	4	82	85	32	0	117	27	30	14	20	25
	BEDFORDSHIRE	27	26	862	721	406	79	1,127	182	101	113	129	184
5	Banbury & Evesham	6	6	149	113	105	18	218	16	21	19	15	47
6	Mid-Thames	8	7	300	221	179	34	400	62	20	40	76	52
7	Oxford & Swindon	8	9	400	340	206	7	546	55	50	44	79	56
	BERKS & OXON	22	22	849	674	490	59	1,164	133	91	103	170	155
8	Bristol	7	7	269	273	134	5	407	63	46	34	14	50
9	Dorset & South Wiltshire	5	6	197	196	121	14	317	41	47	15	19	68
10	Mid-Somerset	5	4	288	230	59	7	289	24	14	17	5	49
11	North Somerset	4	4	135	106	53	5	159	26	21	26	14	35.2
12	West Somerset	7	7	149	139	81	12	220	41	24	15	23	40
13	West Wiltshire & East Somerset	6	6	202	190	111	20	301	37	22	18	12	27.8
	BRISTOL & WESSEX	34	34	1,240	1,134	559	63	1,693	232	174	125	87	270
14	Cumberland	5	7	207	154	107	0	261	24	22	22	28	61
	CUMBERLAND	5	7	207	154	107	0	261	24	22	22	28	61
15	Lincolnshire	8	8	150	140	70	0	210	42	8	18	18	24
16	Nottinghamshire & Derbyshire	10	9	322	280	163	19	443	56	40	28	31	46
	DERBYS, LINCS & NOTTS	18	17	472	420	233	19	653	98	48	46	49	70
17	Cornwall	9	9	186	216	113	19	329	72	43	18	17	42
18	Devon	15	13	446	398	285	28	683	83	64	39	77	97
	DEVON & CORNWALL	24	22	632	614	398	47	1,012	155	107	57	94	139
19	Ipswich & Diss	5	7	174	163	82	7	245	47	19	21	25	34
20	Mid Essex	4	4	94	80	43	7	123	24	5	9	8	25
21	Southern East Anglia	4	5	174	126	45	9	171	34	5	9	53	31
22	Thaxted	4	4	116	76	36	22	112	12	7	13	21	33
	ESSEX & SUFFOLK	17	20	558	445	206	45	651	117	36	52	107	123
23	Bournemouth Coastal	5	6	167	167	94	0	261	68	28	13	18	61
24	Hampshire & Islands	12	11	364	306	212	42	518	72	46	51	25	59
	HANTS, SE DORSET & ISLANDS	17	17	531	473	306	42	779	140	74	64	43	120
25	East Kent	5	6	147	121	85	6	206	19	19	14	17	25
26	West Kent	5	5	137	103	57	2	160	24	13	12	13	27
	KENT	10	11	284	224	142	8	366	43	32	26	30	52
27	Kingston & Wandsworth	5	5	170	198	102	36	300	81	26	38	10	22
28	London West	9	7	338	283	166	38	449	81	36	48	52	48
29	North East Thames	7	7	248	192	55	29	247	40	19	40	28	46
30	North London	5	5	107	106	73	28	179	32	27	18	9	26
31	North West London	6	7	260	192	153	42	345	64	16	53	41	41
32	South East London	7	5	178	162	95	49	257	50	16	29	18	30
33	South London	5	5	218	175	53	15	228	47	17	20	37	40
	LONDON	44	41	1,519	1,308	697	237	2,005	395	157	246	195	253
34	East Cheshire	8	8	179	173	106	35	279	33	18	14	10	36
35	Hardshaw & Mann	5	5	110	92	42	4	134	28	11	15	5	25
36	Manchester & Warrington	5	5	196	179	138	56	317	33	15	24	21	28
37	North Wales/Gogledd Cymru	10	10	187	151	88	0	239	43	18	13	33	45
38	Pendle Hill	5	7	120	87	82	0	169	18	8	6	40	25
39	Wirral & Chester	3	3	126	101	65	14	166	20	10	21	15	30
	N WALES & NW ENGLAND	36	38	918	783	521	109	1,304	175	80	93	124	189
40	Northumbria	8	8	328	240	113	23	353	56	18	24	93	51
41	Teesdale & Cleveland	7	7	182	134	55	17	189	31	16	12	33	31
42	Wensleydale & Swaledale	2	2	39	31	38	0	69	3	2	4	1	5
	NE ENGLAND	17	17	549	405	206	40	611	90	36	40	127	87

Table 5b. Changes in membership, 2007 to 2017

AM reference #	AMs by region+B63	PMs and RMs 2007						Total members & attenders at end 2017	Members joining and leaving over 10 years to Dec 2017*				
		LMs 2017	Total Members at end 2007	Total members at end 2017	Total attenders at end 2017	Children not in membership at end 2017	Convincements		Transfers in	Transfers out	Terminations	Deaths	
43	Cambridgeshire	7	8	303	272	90	42	362	94	36	38	67	60
44	Norfolk & Waveney	11	10	316	289	181	27	470	81	31	24	67	56
	NORFOLK, CAMBS & HUNTS	18	18	619	561	271	69	832	175	67	62	134	116
45	East Scotland	4	3	113	88	52	14	140	15	23	17	12	29
46	North Scotland	12	10	122	134	126	27	260	31	24	19	15	13
47	South East Scotland	9	9	262	243	282	72	525	51	34	44	54	31
48	West Scotland	10	12	226	220	223	20	443	70	32	26	29	43
	SCOTLAND	35	34	723	685	683	133	1,368	167	113	106	110	116
49	Surrey & Hampshire Border	5	5	136	114	50	0	164	53	11	20	24	26
50	Sussex East	9	9	256	216	130	43	346	58	33	20	41	80
51	Sussex West	8	8	281	261	181	36	442	69	41	38	48	59
52	West Weald	8	7	185	140	98	17	238	33	8	23	31	40
	SUSSEX & SURREY	30	29	858	731	459	96	1,190	213	93	101	144	205
53	Central England	19	17	624	505	375	0	880	89	67	70	53	144
54	Leicester	4	4	222	210	153	20	363	47	19	10	3	55
55	Staffordshire	8	7	139	124	79	5	203	35	15	14	21	16
	WARWICK, LEICS & STAFFS	31	28	985	839	607	25	1,446	171	101	94	77	215
56	Gloucestershire	10	8	305	274	213	49	487	45	47	30	33	67
57	Mid-Wales/Canolbarth Cymru	6	6	86	82	75	24	157	12	25	14	2	13.5
58	South Wales/De Cymru	13	13	248	203	153	36	356	53	30	36	47	50
59	Southern Marches/y Gororau Deheuol	9	9	201	203	138	28	341	54	40	30	21	74.5
60	Worcestershire & Shropshire	7	7	224	193	109	20	302	44	22	27	31	50
	WESTERN	45	43	1,064	955	688	157	1,643	207	164	137	134	255
61	Kendal & Sedbergh	4	4	126	121	64	21	185	18	18	9	2	25
62	Lancashire Central & North	8	5	226	221	103	33	324	43	27	30	17	36
63	Swarthmoor (SW Cumbria)	5	4	60	58	29	0	87	5	16	1	3	31
	WESTMORLAND	17	13	412	400	196	54	596	66	61	40	22	92
64	Brighouse West Yorkshire	5	5	141	166	107	38	273	47	27	17	19	17
65	Central Yorkshire	6	6	149	135	44	13	179	37	20	16	19	28
66	Craven & Keighley	4	5	138	120	90	7	210	32	18	13	27	27
67	Leeds	7	7	225	193	121	31	314	54	36	26	60	57
68	Pickering & Hull	8	7	302	179	109	15	288	19	18	26	51	87
69	Sheffield & Balby	4	4	214	219	92	46	311	55	24	22	12	39
70	York	5	5	456	396	217	74	613	74	47	24	64	107
	YORKSHIRE	39	39	1,625	1,408	780	224	2,188	318	190	144	252	362
	BYM Total	486	476	14,907	12,934	7,955	1,506	20,889	3099	1747	1671	2056	3,064

NB. Figures for North Somerset, West Wiltshire & East Somerset, Mid-Wales/Canolbarth Cymru and Southern Marches/y Gororau Deheuol AMs have been adjusted to reflect boundary changes that occurred between 2009 and 2011. Cumulative figures for convincements, transfers, terminations and deaths for these meetings are estimated to reflect the proportion of the membership forming each new area meeting in the year they were formed.

Table 6. Area meetings by region, 2007 to 2017

AM reference #	AMs by number of members	Members		Attendees			Members & Attendees		Members joining and leaving over 10 years to Dec 2017*					
		Number of LMs	Members (Dec 2017)	Average annual change over 10 years to Dec 2017	Attendees (Dec 2017)	% adults who are attenders (Dec 2017)	Average annual change over 10 years to Dec 2017	Members & Attendees Dec 2017	Average annual change over 10 years to Dec 2017	Convincements	Transfers in	Transfers out	Terminations	Deaths
53	Central England	17	505	-2%	375	43%	6%	880	0%	18%	13%	14%	10%	29%
18	Devon	13	398	-1%	313	44%	2%	711	0%	21%	16%	10%	19%	24%
70	York	5	396	-1%	291	42%	13%	687	2%	19%	12%	6%	16%	27%
7	Oxford & Swindon	9	340	-2%	213	39%	7%	553	1%	16%	15%	13%	23%	16%
24	Hampshire & Islands	11	306	-2%	254	45%	6%	560	1%	24%	15%	17%	8%	19%
3	Luton & Leighton	9	293	-1%	207	41%	1%	500	0%	25%	11%	16%	17%	18%
44	Norfolk & Waveney	10	289	-1%	208	42%	-1%	497	-1%	28%	11%	8%	23%	19%
16	Nottinghamshire & Derbyshire	9	280	-1%	182	39%	0%	462	-1%	20%	14%	10%	11%	16%
43	Cambridgeshire	8	272	-1%	132	33%	0%	404	-1%	35%	13%	14%	25%	22%
56	Gloucestershire	8	274	-1%	262	49%	4%	536	1%	16%	17%	11%	12%	24%
28	London West	7	283	-2%	204	42%	1%	487	-1%	29%	13%	17%	18%	17%
8	Bristol	7	273	0%	139	34%	-1%	412	0%	23%	17%	12%	5%	18%
51	Sussex West	8	261	-1%	217	45%	1%	478	0%	26%	16%	15%	18%	23%
47	South East Scotland	9	243	-1%	354	59%	5%	597	2%	21%	14%	18%	22%	13%
40	Northumbria	8	240	-3%	136	36%	1%	376	-2%	23%	8%	10%	39%	21%
10	Mid-Somerset	4	230	-2%	66	22%	-1%	296	-2%	10%	6%	7%	2%	21%
6	Mid-Thames	7	221	-3%	213	49%	-3%	434	-3%	28%	9%	18%	34%	24%
62	Lancashire Central & North	5	221	0%	136	38%	0%	357	0%	19%	12%	14%	8%	16%
17	Cornwall	9	216	2%	132	38%	1%	348	1%	33%	20%	8%	8%	19%
67	Leeds	7	193	-1%	152	44%	1%	345	0%	28%	19%	13%	31%	30%
58	South Wales/De Cymru	13	203	-2%	189	48%	4%	392	0%	26%	15%	18%	23%	25%
50	Sussex East	9	216	-2%	173	44%	6%	389	1%	27%	15%	9%	19%	37%
48	West Scotland	12	220	0%	243	52%	7%	463	3%	32%	15%	12%	13%	20%
69	Sheffield & Balby	4	219	0%	138	39%	9%	357	2%	25%	11%	10%	5%	18%
54	Leicester	4	210	-1%	173	45%	5%	383	1%	22%	9%	5%	1%	26%
59	Southern Marches/y Gororau Deheuol	9	203	0%	166	45%	0%	369	0%	26%	20%	15%	10%	37%
9	Dorset & South Wiltshire	6	196	0%	135	41%	-1%	331	0%	21%	24%	8%	10%	35%
1	Chilterns	7	194	-2%	130	40%	-3%	324	-2%	26%	14%	13%	14%	37%
27	Kingston & Wandsworth	5	198	2%	138	41%	0%	336	1%	41%	13%	19%	5%	11%
31	North West London	7	192	-3%	195	50%	4%	387	0%	33%	8%	28%	21%	21%
60	Worcestershire & Shropshire	7	193	-1%	129	40%	10%	322	1%	23%	11%	14%	16%	26%
29	North East Thames	7	192	-2%	84	30%	0%	276	-2%	21%	10%	21%	15%	24%
68	Pickering & Hull	7	179	-4%	124	41%	0%	303	-3%	11%	10%	15%	28%	49%
13	West Wiltshire & East Somerset	6	190	-1%	131	41%	1%	321	0%	19%	11%	9%	6%	15%
23	Bournemouth Coastal	6	167	0%	94	36%	2%	261	1%	41%	17%	8%	11%	37%
36	Manchester & Warrington	5	179	-1%	194	52%	6%	373	2%	18%	8%	13%	12%	16%
34	East Cheshire	8	173	0%	141	45%	2%	314	1%	19%	10%	8%	6%	21%
33	South London	5	175	-2%	68	28%	-1%	243	-2%	27%	10%	11%	21%	23%
32	South East London	5	162	-1%	144	47%	2%	306	0%	31%	10%	18%	11%	19%
64	Brighouse West Yorkshire	5	166	2%	145	47%	2%	311	2%	28%	16%	10%	11%	10%
19	Ipswich & Diss	7	163	-1%	89	35%	0%	252	0%	29%	12%	13%	15%	21%
37	North Wales/Gogledd Cymru	10	151	-2%	88	37%	-2%	239	-2%	28%	12%	9%	22%	30%
14	Cumberland	7	154	-3%	107	41%	3%	261	-1%	16%	14%	14%	18%	40%
2	Hertford & Hitchin	6	149	-3%	116	44%	3%	265	-1%	18%	8%	18%	21%	23%
52	West Weald	7	140	-2%	115	45%	-1%	255	-2%	24%	6%	16%	22%	29%
15	Lincolnshire	8	140	-1%	70	33%	1%	210	0%	30%	6%	13%	13%	17%
12	West Somerset	7	139	-1%	93	40%	2%	232	0%	29%	17%	11%	17%	29%
21	Southern East Anglia	5	126	-3%	54	30%	-1%	180	-2%	27%	4%	7%	42%	25%
65	Central Yorkshire	6	135	-1%	57	30%	-1%	192	-1%	27%	15%	12%	14%	21%
46	North Scotland	10	134	1%	153	53%	2%	287	1%	23%	18%	14%	11%	10%

Table 6b. Area meetings by region, 2007 to 2017

AM reference # AMs by number of members	Number of LMs	Members		Attenders			Members & Attenders		Members joining and leaving over 10 years to Dec 2017*				
		Members (Dec 2017)	Average annual change over 10 years to Dec 2017	Attenders (Dec 2017)	% adults who are attenders (Dec 2017)	Average annual change over 10 years to Dec 2017	Members & Attenders Dec 2017	Average annual change over 10 years to Dec 2017	Convincements	Transfers in	Transfers out	Terminations	Deaths
41 Teesdale & Cleveland	7	134	▼ -3%	72	35% ▲	8%	206	-1%	23%	12%	9%	25%	23%
61 Kendal & Sedbergh	4	121	0%	85	41% ▲	2%	206	▲ 1%	15%	15%	7%	2%	21%
25 East Kent	6	121	-2%	91	43% ▲	4%	212	0%	16%	16%	12%	14%	21%
66 Craven & Keighley	5	120	-1%	97	45%	0%	217	-1%	27%	15%	11%	23%	23%
55 Staffordshire	7	124	-1%	84	40% ▲	2%	208	0%	28%	12%	11%	17%	13%
5 Banbury & Evesham	6	113	▼ -2%	123	52%	-1%	236	-2%	14%	19%	17%	13%	42%
11 North Somerset	4	106	▼ -2%	58	35% ▼	-2%	164	▼ -2%	25%	20%	25%	13%	33%
49 Surrey & Hampshire Border	5	114	-2%	50	30% ▲	2%	164	-1%	46%	10%	18%	21%	23%
39 Wirral & Chester	3	101	-2%	79	44% ▼	-4%	180	▼ -3%	20%	10%	21%	15%	30%
26 West Kent	5	103	▼ -2%	59	36% ▼	-4%	162	▼ -3%	23%	13%	12%	13%	26%
30 North London	5	106	0%	101	49% ▲	8%	207	▲ 3%	30%	25%	17%	8%	25%
4 Northamptonshire	4	85	0%	32	27% ▼	-4%	117	-1%	32%	35%	16%	24%	29%
35 Hardshaw & Mann	5	92	-2%	46	33% ▼	-4%	138	▼ -3%	30%	12%	16%	5%	27%
45 East Scotland	3	88	▼ -2%	66	43% ▲	1%	154	-1%	17%	26%	19%	14%	33%
57 Mid-Wales/Canolbarth Cymru	6	82	0%	99	55% ▲	4%	181	▲ 1%	14%	31%	17%	3%	16%
20 Mid Essex	4	80	-1%	50	38%	0%	130	-1%	30%	6%	11%	10%	31%
38 Pendle Hill	7	87	▼ -3%	82	49% ▲	3%	169	-1%	21%	9%	7%	46%	29%
22 Thaxted	4	76	▼ -3%	58	43% ▲	14%	134	0%	16%	9%	17%	28%	43%
63 Swarthmoor (SW Cumbria)	4	58	0%	29	33% ▼	-3%	87	-1%	9%	28%	2%	5%	53%
42 Wensleydale & Swaledale	2	31	▼ -2%	38	55%	0%	69	-1%	10%	6%	13%	3%	16%
BYM Total	476	12,934	-1%	9,461	45%	2%	22,395	0%	24%	14%	13%	16%	24%

▲ Indicates increase in numbers

▼ Indicates decrease by 4% or more

* Figures for members joining and leaving may include individuals more than once, e.g. if they come into membership and move during the 10 year period, or if they move in and out of an area during the same period.

AM reference # match numbers used on map on back cover.

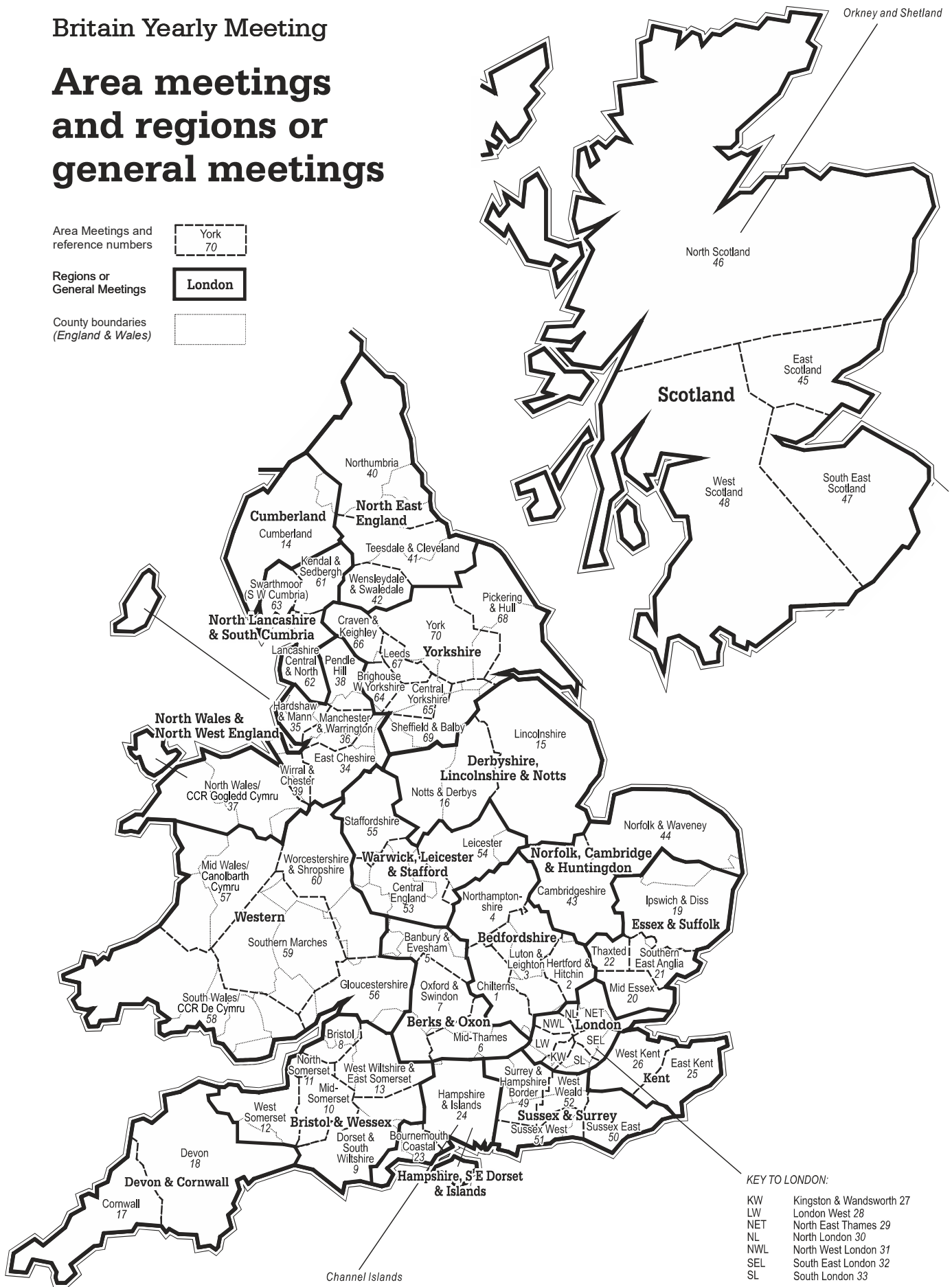
Britain Yearly Meeting

Area meetings and regions or general meetings

Area Meetings and reference numbers

Regions or General Meetings

County boundaries (England & Wales)



Follow us on social media @BritishQuakers

www.quaker.org.uk